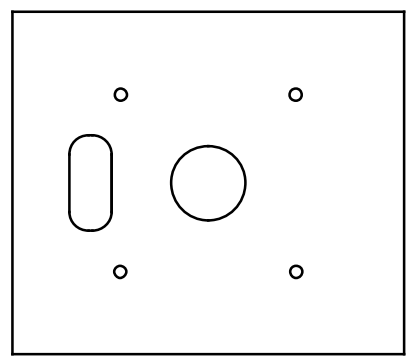


Buildog II horizontal stab

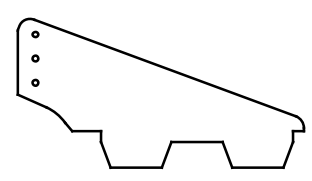
Rev 9  
1aug19

22 degree double bevel (both sides of hinge line)

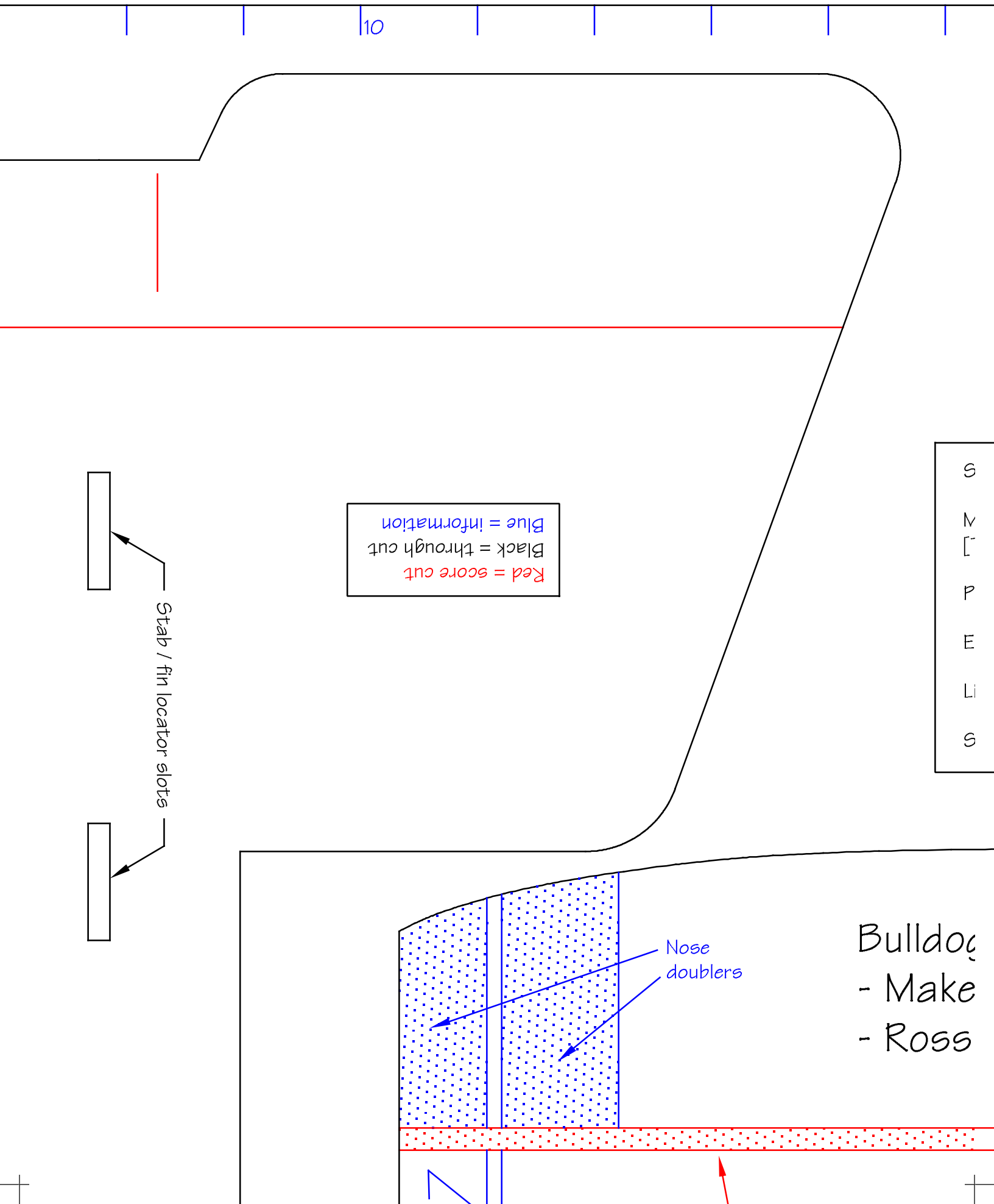
30



Firewall - 1/8" aircraft ply



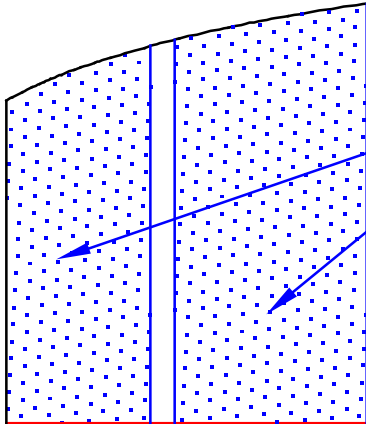
Control horns  
1 mm aircraft ply



Red = score cut  
Black = through cut  
Blue = information

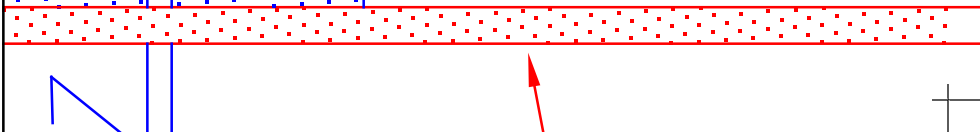
S  
M  
P  
E  
L  
S

Stab / fin locator slots



Nose doublers

Bulldozer  
- Make  
- Ross



# BULLDOG II

SPORT/COMBAT FOAMIE

DIH Rev 9 1 AUG 19

## SUGGESTED EQUIPMENT

Motor: 50 to 70 gram (150 to 200 watt), Kv = 1000 to 1200  
 Turnigy SK3 2830-1020, 2830-1130, or similar]

Prop: 10x6 or as required by selected motor and flight testing

ESC: Turnigy Plush 18 amp

Battery: 3S 1300 or 1500 mAh

Servos: HXT900 (HXT500 can be used for elevator and rudder)

Rev 9  
1aug19

3) II fuselage

from Studio board 651 (Dollarama) if available  
 board (411) can be used

30 inches

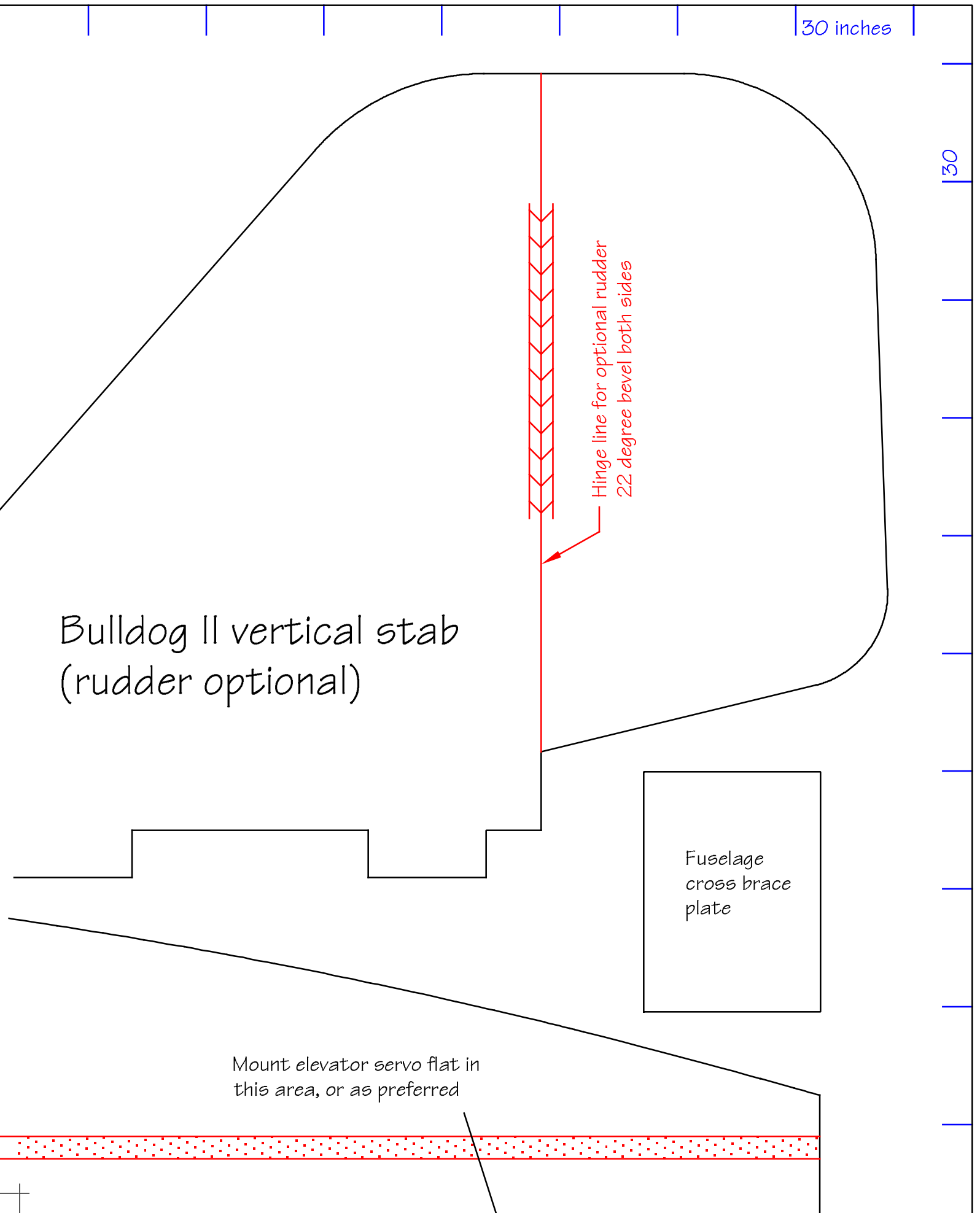
30

Hinge line for optional rudder  
22 degree bevel both sides

Bulldog II vertical stab  
(rudder optional)

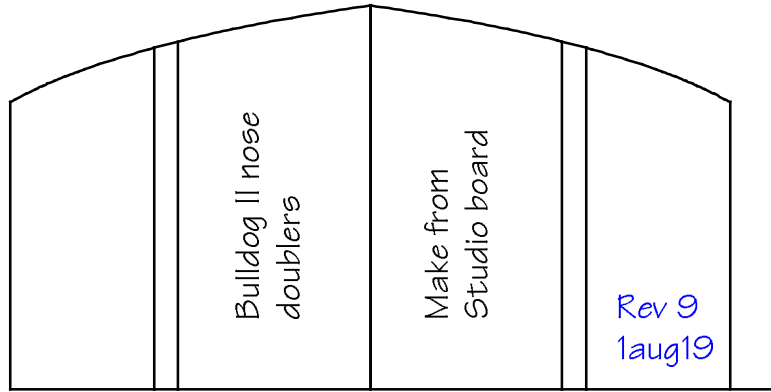
Fuselage  
cross brace  
plate

Mount elevator servo flat in  
this area, or as preferred



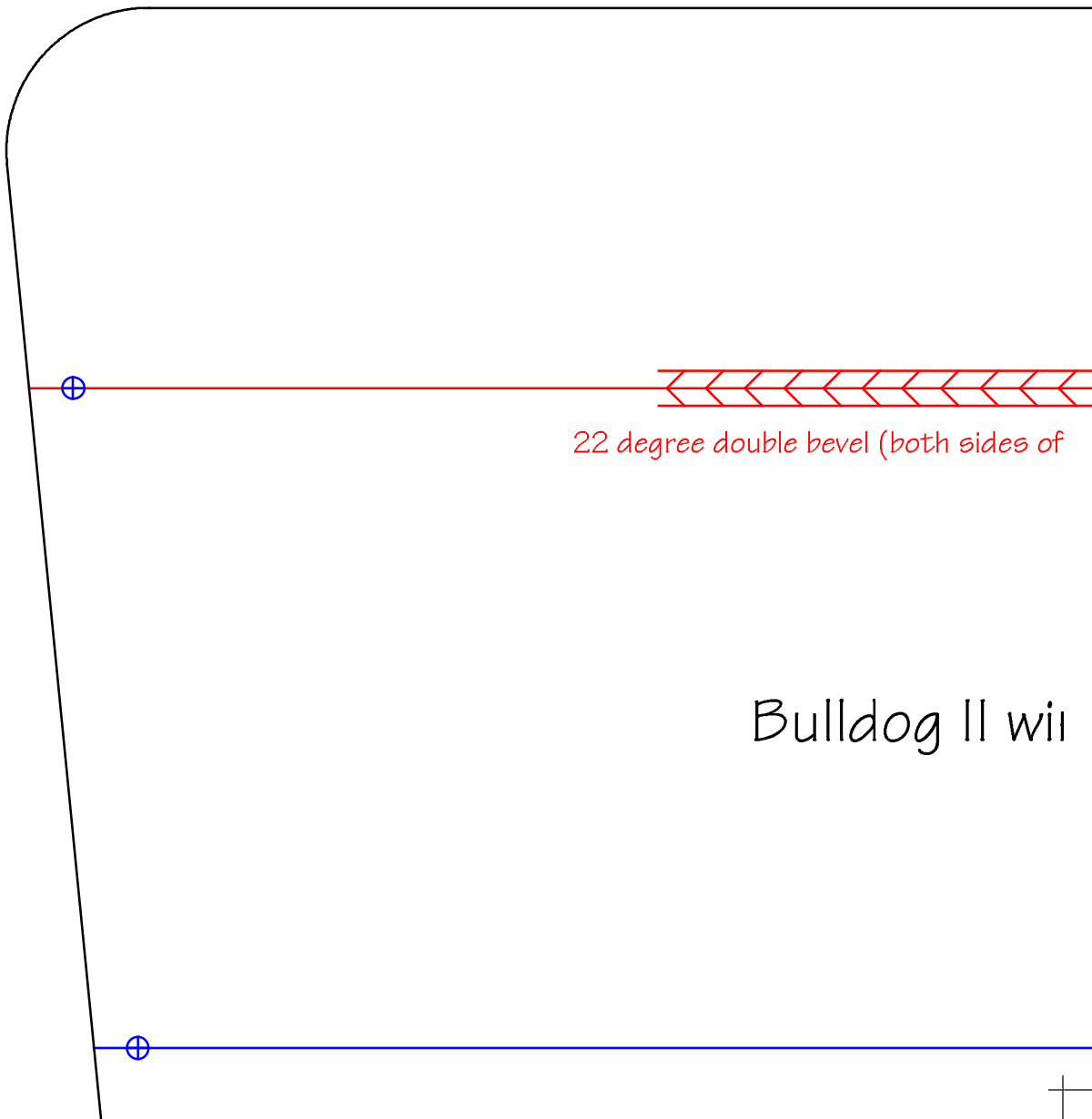
(shown for SK3 X-mount)

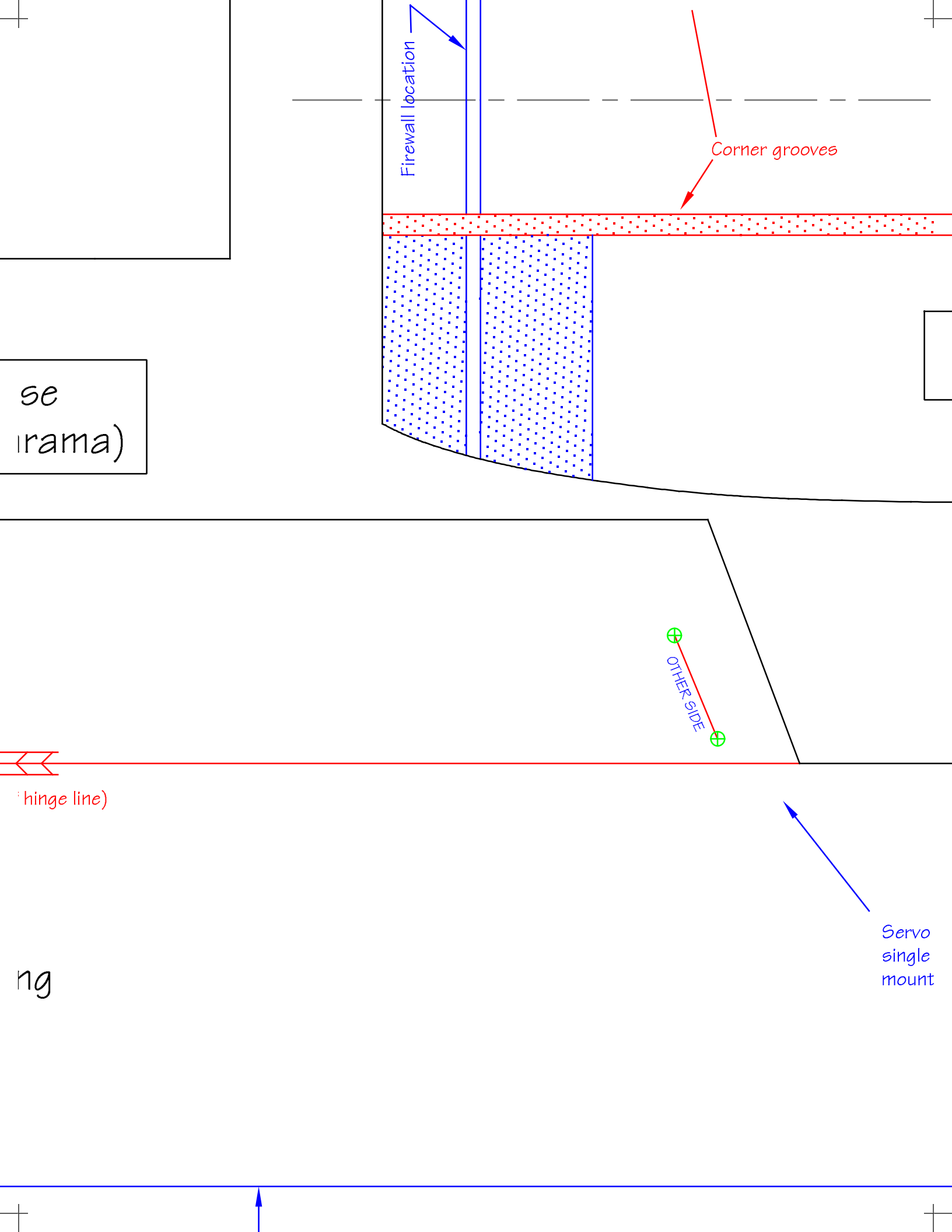
20

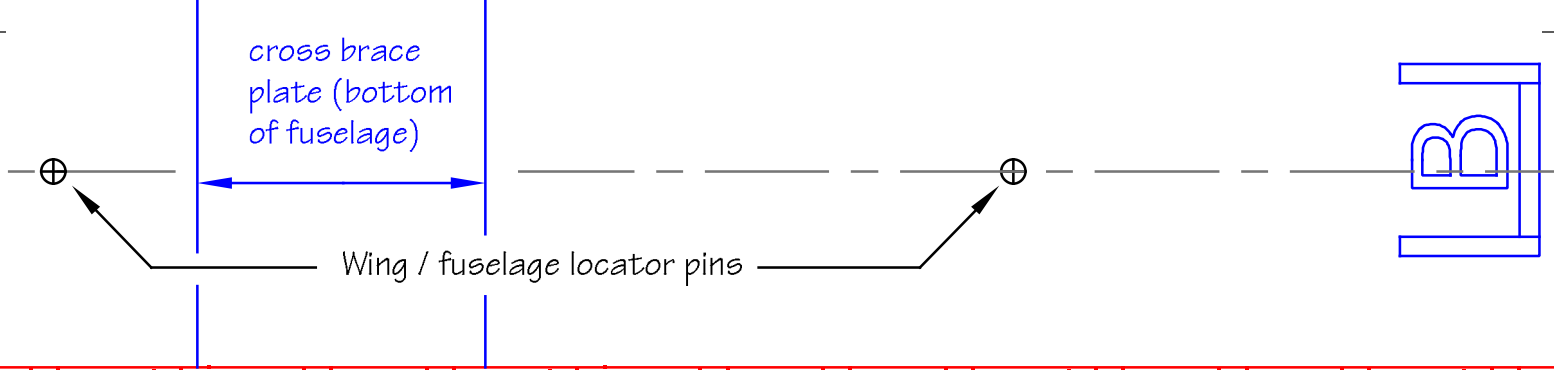


(Can substitute laser cut 1/8" ply firewall assembly)

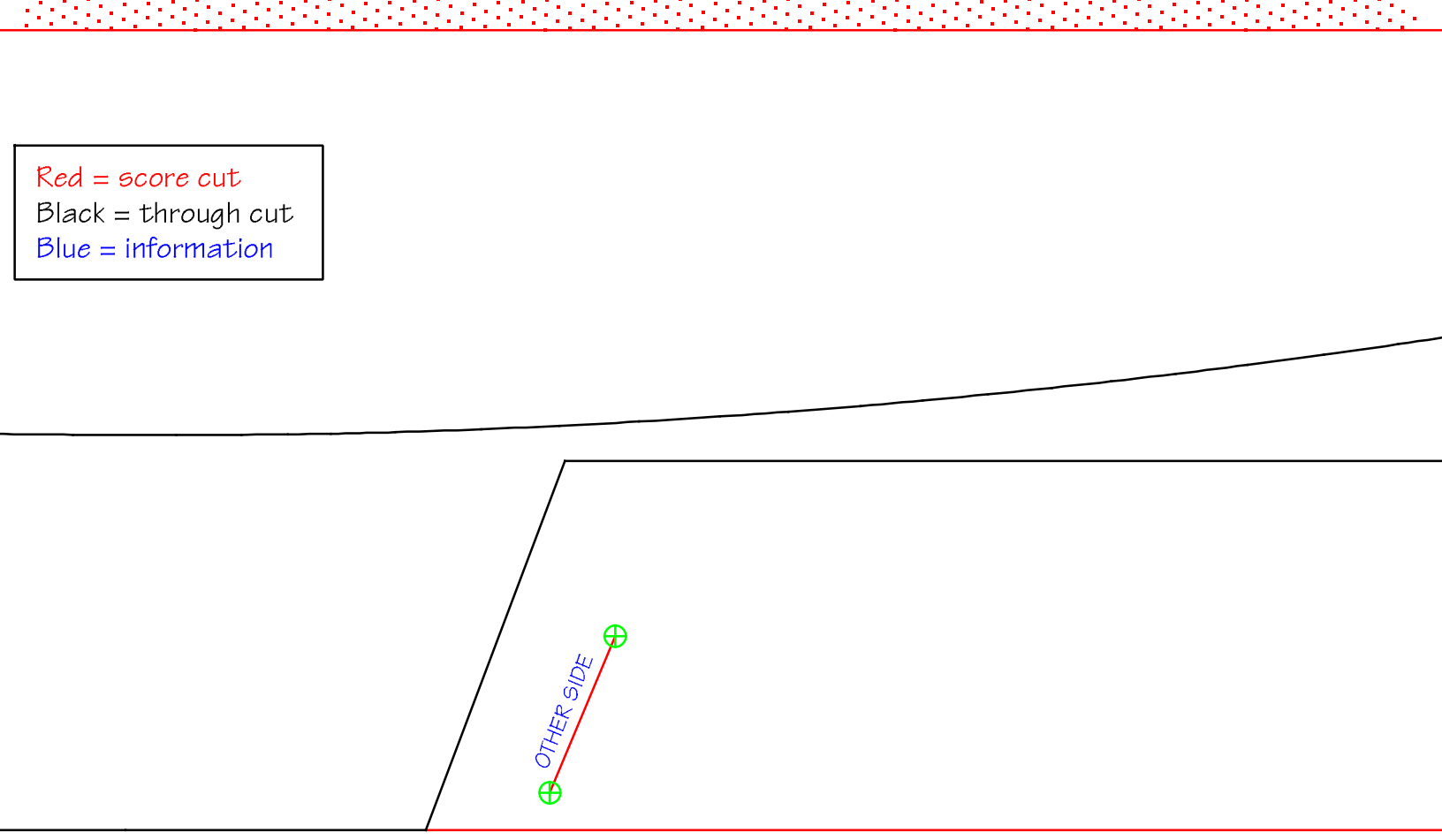
Unless indicated otherwise, u  
Elmer's Ross board 411 (Dolla







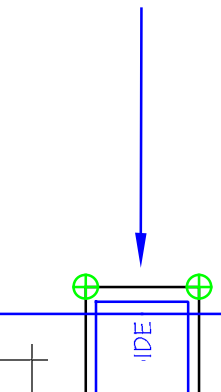
Red = score cut  
 Black = through cut  
 Blue = information

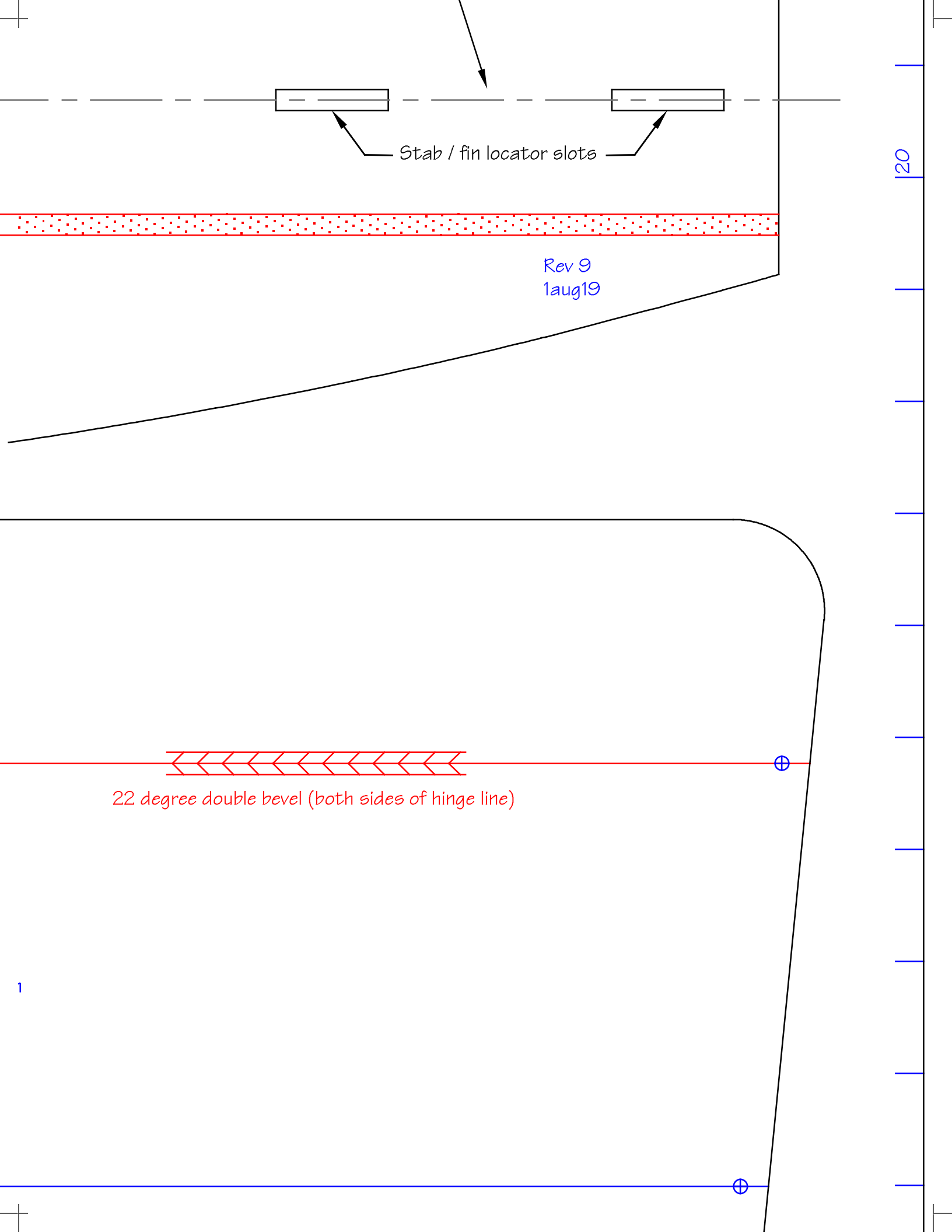


and horn locations for aileron servo, through cut on top of wing

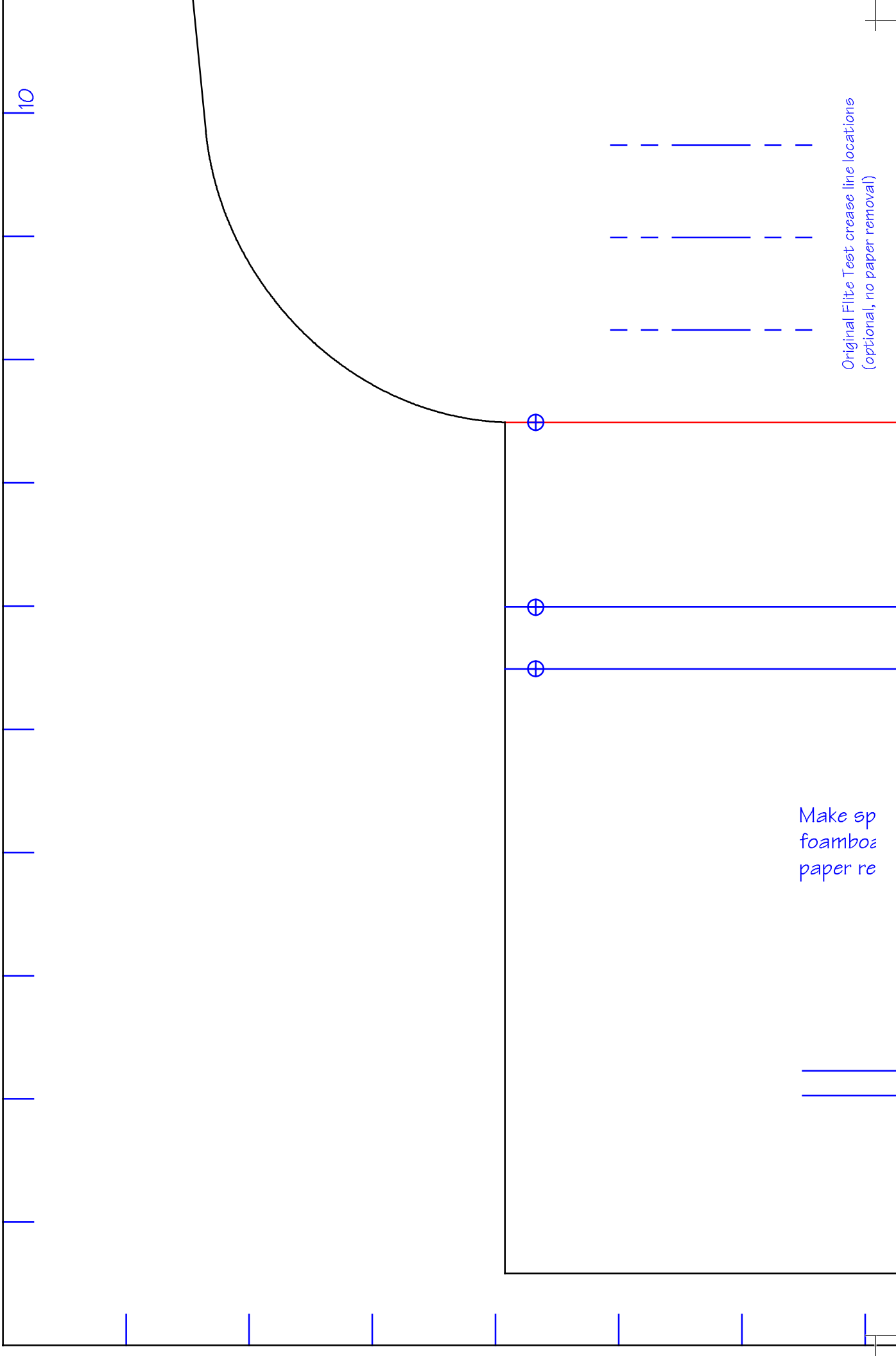
Pin-pricked indicator marks

- ⊕ This side (inside of wing): 10 total
- ⊕ Other side (outside of wing): 8 top, 6 bottom









10

Original Flite Test crease line locations  
(optional, no paper removal)

Make sp  
foamboz  
paper re

Remove inside top paper

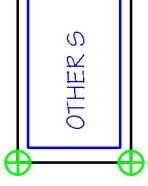
spar location

ar from 3 layers of  
ard, 1/2" wide, laid flat,  
moved from top of stack

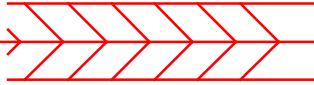
Red = score cut  
Black = through cut  
Blue = information

Fuselage outside edge indicators

CG MARKS  
OTHER SIDE



45 degree double bevel



OTHER SIDE



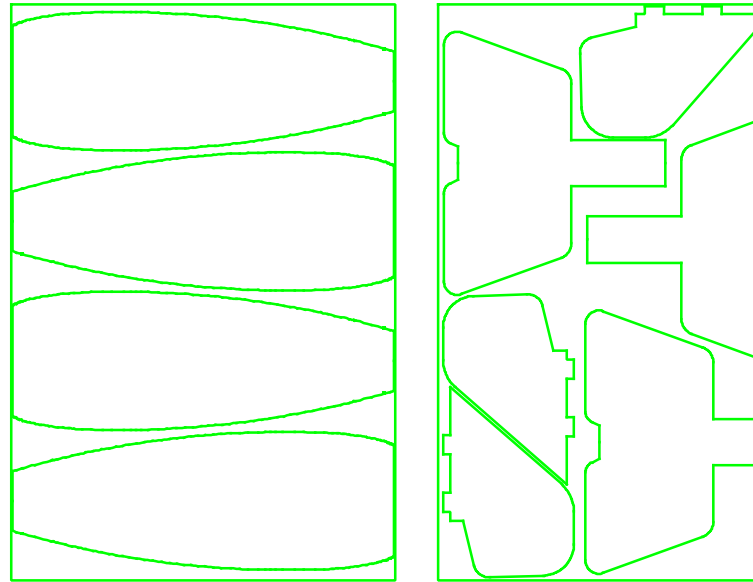
1"



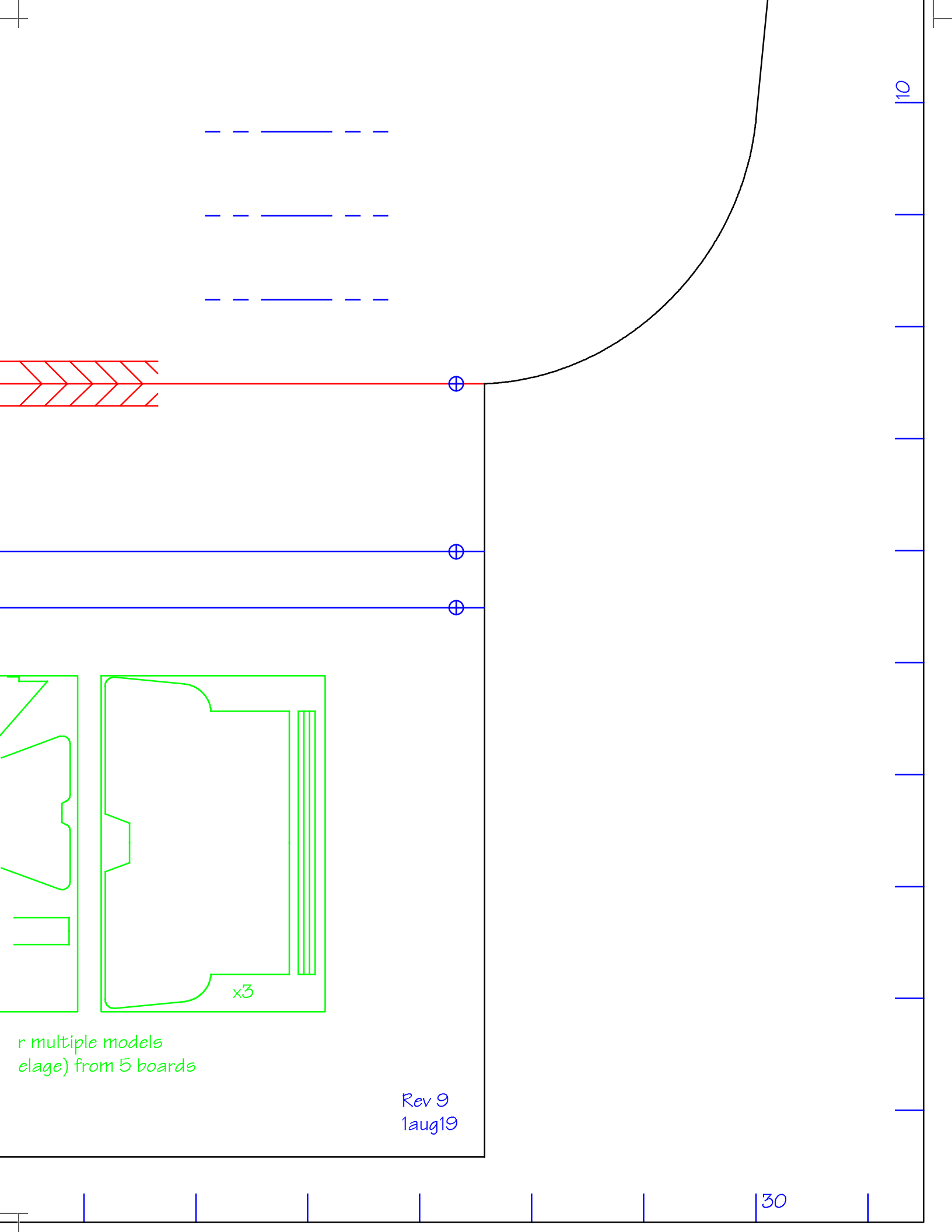
CG IS 2.4"  
BEHIND WING L.E.

Wing / fuselage locator pins

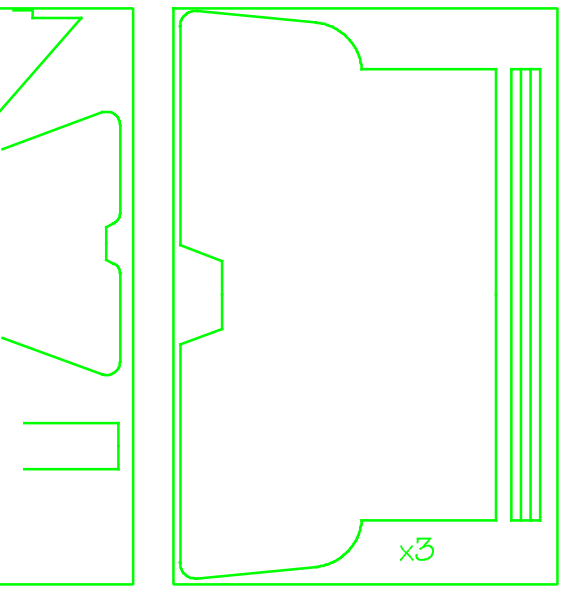
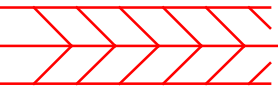
OTHER SIDE



Suggested cutting layout fo  
Can get 3 models (plus extra fus



10



x3

r multiple models  
elage) from 5 boards

Rev 9  
1aug19

30