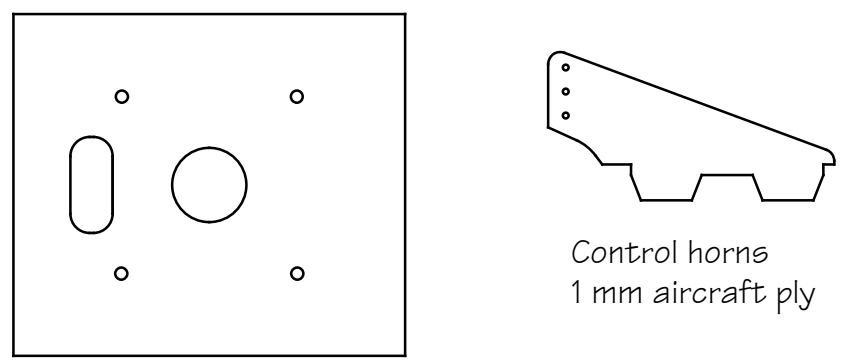
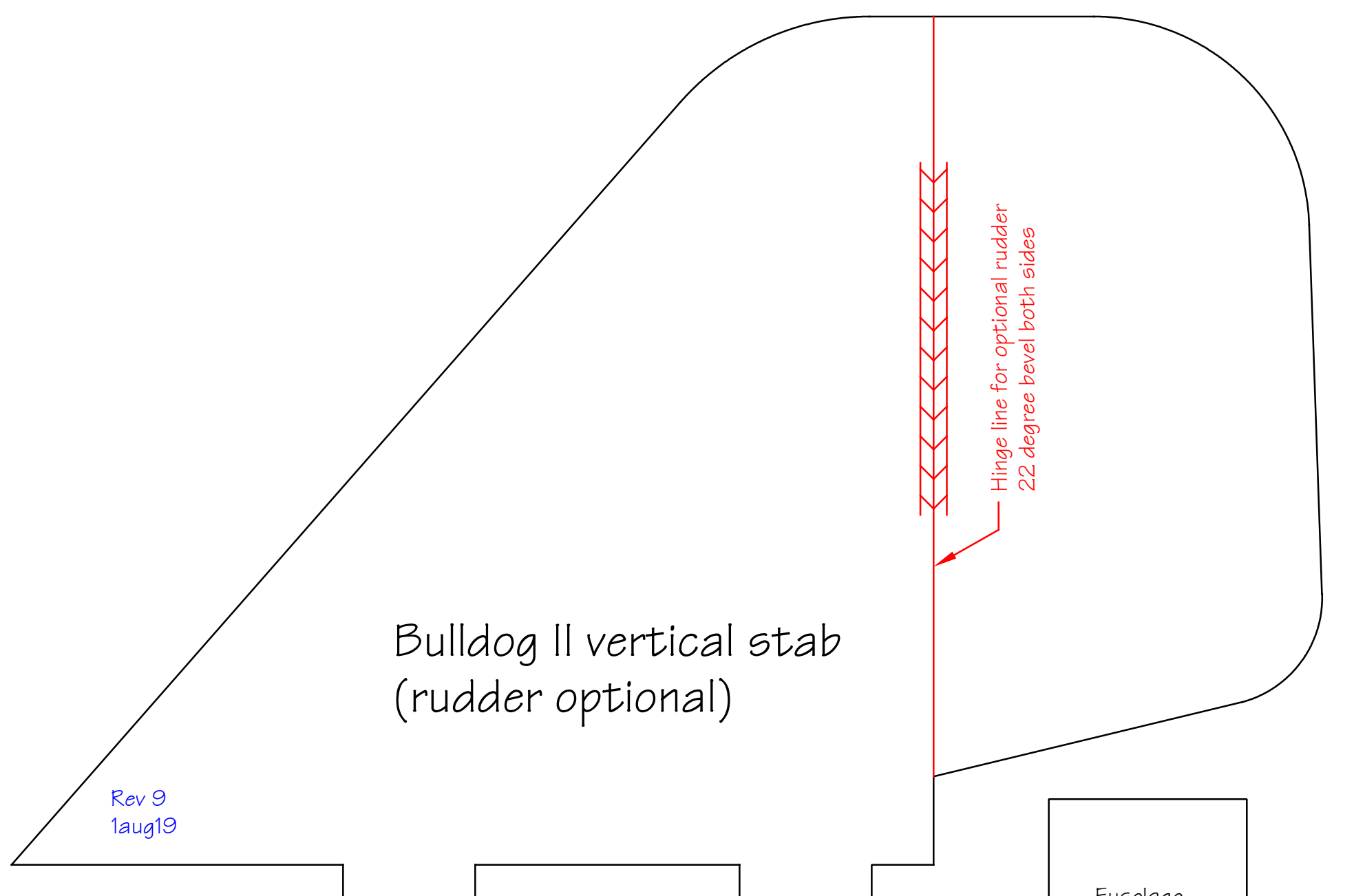
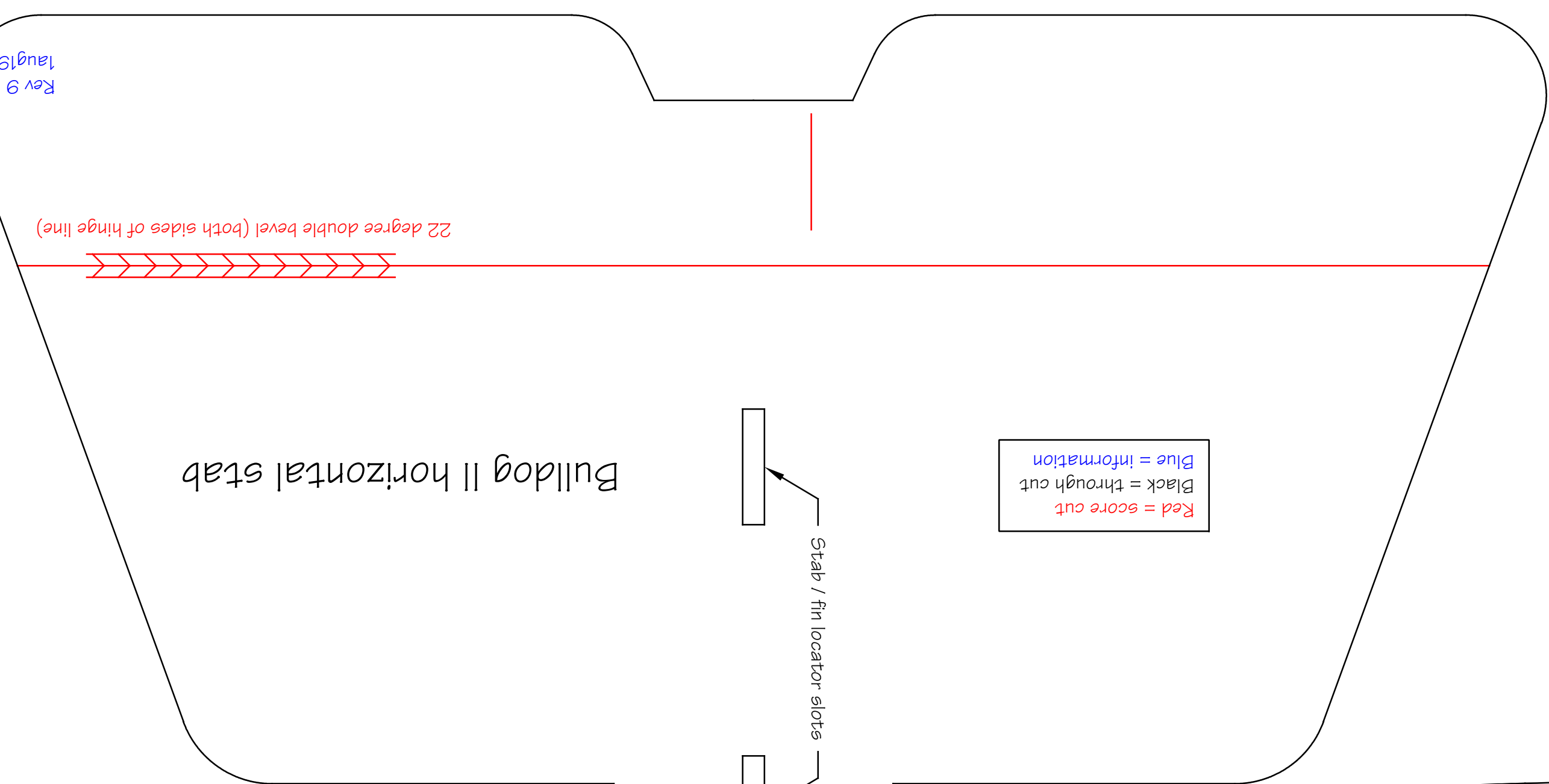


BULLDOG II

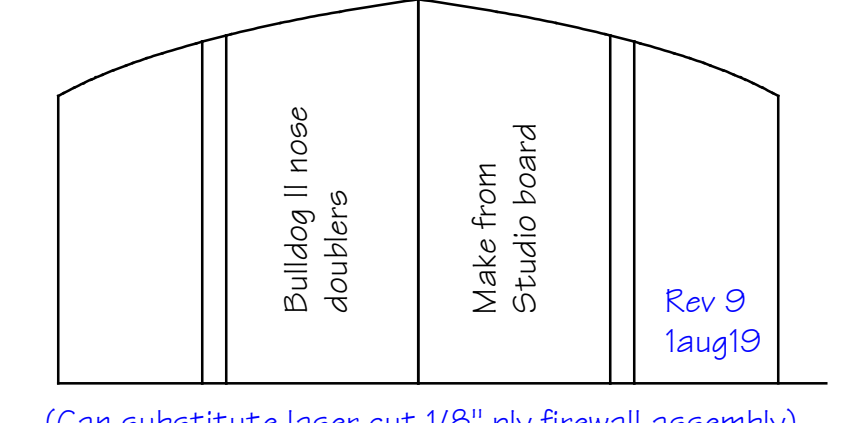
SPORT/COMBAT FOAMIE
DIH Rev 9 1 AUG 19

SUGGESTED EQUIPMENT
 Motor: 50 to 70 gram (150 to 200 watt), Kv = 1000 to 1200 [Turnigy SK3 2830-1020, 2830-1130, or similar]
 Prop: 10x6 or as required by selected motor and flight testing
 ESC: Turnigy Plush 18 amp
 Lipo: 3S 1300 or 1500 mAh
 Servos: HXT900 (HXT500 can be used for elevator and rudder)

Bulldog II fuselage
 - Make from Studio board 651 (Dollarama) if available
 - Ross board (411) can be used



Firewall - 1/8" aircraft ply (shown for SK3 X-mount)



Unless indicated otherwise, use Elmer's Ross board 411 (Dollarama)

